

# TRR770

## UV-LED Roll-to-Roll & Flatbed Inkjet Printer



Dual-roll printing mode



Single-roll printing mode



3 printing modes available:

Dual-roll Printing: Simultaneous printing of two separate rolls

Single-roll Printing: Max. print width of 770mm

Flatbed Printing: Template Printing on rigid objects

**TRR770** is an industrial roll-to-roll and flatbed UV-LED inkjet printer with small footprint and superior performance, specially designed for high-quality colorful label and industrial decoration printing. TRR770 supports the printing of most label materials widely used in food, beverages, pharmaceuticals, and household chemical products, as well as a wide range of rigid media substrates, bringing you more business opportunities and potential profits. TRR770 is an ideal choice for short-run and on-demand printing of labels and customized decorations.

### Advanced Print Head Control Technology

TRR770 is equipped with industrial DOD piezoelectric inkjet print heads featuring 600dpi physical resolution and minimum 7pl droplet with high jetting frequency.

Amica's proprietary VDS (Variable Droplet Size) control technology produces vivid colors, smooth gradients, as well as crisp and clear small-sized texts and lines, providing you with high-quality final label prints.



### Variable Data Printing Builds Added Value Applications

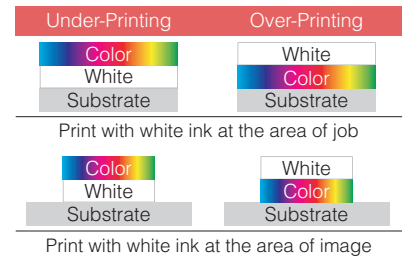
TRR770 supports colorful variable data printing, including texts, numbers, time, serial numbers, barcodes, etc. Variable data printing helps you create added value applications and obtain more business opportunities for personalized labels.



### White Ink Brings More Possibilities

By controlling the amount or number of white ink layers, Amica's high density white ink delivers vibrant and exceptional image quality on transparent, colored or metallic labels with less ink consumption. White ink can be applied as a base or over layer printed to obtain labels with vivid colors and bright images.

The separate white ink circulation system keeps the white ink properly mixed continuously for consistent and stable print quality.



### Varnish Ink Offers Stunning Tactile and Visual Effects

Varnish ink printing provides versatile surface finishes with amazing tactile and visual effects to beautify the appearance of labels and grasp viewers' attention. The overall label can be covered with a gloss/ matte finish to offer a similar look as lamination; or glossy/ matte spot varnish can be added to some specified appealing parts to highlight important details, such as logos, slogans or special designs.

Moreover, embossed effects can be attained by laying down multiple layers of varnish ink.



Label with a gloss finish



Label with a matte finish



Label with spot varnish



Colorful images and embossed effects on labels with White ink + CMYK + Varnish ink

## Dual-roll Printing Mode

enables you to increasingly enhance the production flexibility & efficiency.

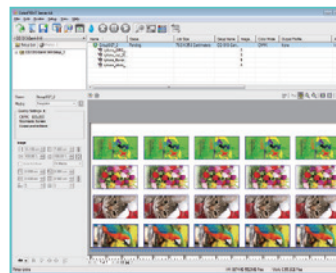
Different width rolls, different diameter rolls, different jobs, or different media can be simultaneously printed as two separate rolls.



Dual-roll Printing Mode

## Template Printing in Flatbed Printing Mode

With Flatbed Printing mode, TRR770 is an ideal solution for printing multiple small-sized objects simultaneously, even with different artworks. The fixture can be placed on the flatbed table to quickly position small-sized objects. The ColorPRINT RIP software allows to customize "template" according to the fixture and define each image. The real-time preview achieves what you see is what you print.



Custom Template



Template Printing

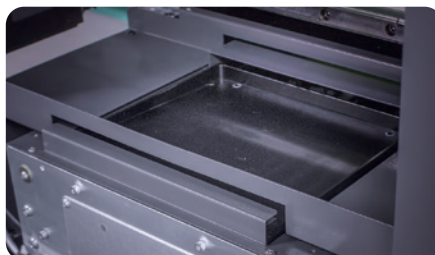
### Active Negative Pressure System

An Active Negative Pressure System with digital control pressure display gauge ensures high-quality printing at higher possible firing frequency.



### Print Head Maintenance Module

Based on an all-in-one design concept, the small and compact Print Head Maintenance Module allows automatic purging, wiping and capping for convenient unattended operation.



### Automatic Ink Supply System

Automatic Ink Supply System monitors and controls the ink levels of the main/sub ink tanks with liquid level sensors. The alarm will be automatically triggered for ink shortage or overflow.





## TECHNICAL SPECIFICATIONS

Printing	Print technology: DOD piezoelectric, automatic voltage and temperature control Print resolution: 1440 × 1200dpi, 1440 × 900dpi, 1440 × 600dpi; 720 × 1200dpi, 720 × 900dpi, 720 × 600dpi Native drop volume: 7pl-21pl with grayscale Curing system: double UV-LED lamps with air cooled Print head maintenance: Automatic Print Head Maintenance Module for purging, wiping and capping	
Ink	Ink type: UV curable ink; Ink tank volume: 1.5L for each color Ink channels: Up to 8 ink channels; CMYK + LcLm/ S1S2 + White + Varnish/ Primer Automatic ink supply system; Active negative pressure system	
Software and User Interface	Printer Control Software (PCS), ColorPRINT RIP software, MagicPage VDP Software Control panel with color LCD display panel	
Operating Environment	Temperature: 16-28°C (61-82°F); Humidity: 40-70% (Recommended); Altitude: up to 1000m (3281ft)	
Power Requirements	Frequency: 50-60Hz; Voltage: 220V ± 10%; Power: 2.2KW/ 10A	
Formats	Popular desktop file formats, including JPEG, TIFF, PDF, EPS and DCS	
Connectivity	Fast Ethernet	
Dimensions (W × D × H)	2261mm × 1909mm × 1649mm (89.0" × 75.2" × 64.9")	
Weight	540kg (1190lbs)	
	<b>Roll-to-Roll Mode</b>	<b>Flatbed Mode</b>
Printable Size	W 770mm (30.3")	W 770mm × D 430mm (30.3" × 16.9")
Media Types	Self-adhesive label stock, PP, PE and PET, coated paper, uncoated paper, etc.	PVC, wood, glass, foam board, acrylic, tile, metal, plywood, plastic, etc.
Max. Media Size	W 770mm (30.3") (Single-roll); overall W 660mm (26.0") (Dual-roll)	W 830mm × D 500mm (32.6" × 19.6")
Media Thickness	Max. 1.4mm (0.055")	Max. 25.4mm (1.0")
Roll Handling Capacity	Roll diameter: max. 300mm (11.8"); Roll weight: within 30kg (66lbs); Core diameter: 76.2mm (3.0")	-

## PRINT PRODUCTIVITY

Print Head Model		MH5420		
Number of Print Heads		2	3	4
Number of Colors		CMYK	WW + CMYK	WW + CMYK + W
Productivity in Roll-to-roll Print Mode <i>Unit: m<sup>2</sup>/hr. (ft<sup>2</sup>/hr.)</i>	720 × 600dpi, 4 pass	15.6 (168)	15.1 (163)	6.5 (70)
	720 × 900dpi, 6 pass	11.6 (125)	11.0 (118)	5.1 (55)
Productivity in Flatbed Print Mode <i>Unit: m<sup>2</sup>/hr. (ft<sup>2</sup>/hr.)</i>	720 × 600dpi, 4 pass	12.4 (133)	11.9 (128)	6.5 (70)
	720 × 900dpi, 6 pass	10.1 (109)	9.2 (99)	5.1 (55)

- Productivity in flatbed print mode is based on the printing zone size of 770mm (W) × 430mm (D).
- Productivity in roll-to-roll print mode is based on the printing width of 770mm.
- Productivity in flatbed or roll-to-roll print mode will float ± 10%.

## APPLICATIONS

Roll-to-roll: labels for household chemical products, food, pharmaceuticals, beverages, etc.  
Flatbed: industrial decorations, cards, indoor displays, etc.



### AMICA SYSTEMS Europe B.V.

Camerastraat 6, 1322 BC Almere, The Netherlands Phone: +31 (0) 36 21 00 166  
E-mail: info@amicasystems.eu For more information, please visit [www.amicasystems.eu](http://www.amicasystems.eu)

The information contained herein is subject to change without notice. All terms and product names may be trademarks or registered trademarks of their respective owners, and are hereby acknowledged.

©2001-2019 Amica Systems

All rights reserved

1909 - c0405

