

LPS 330 Label Press

Versatile UV-LED Inkjet System



- Up to 720 × 1200 DPI
- Up to 320 mm width per print swath
- Printing White + CMYK UV
- Roll-to-Roll & Flatbed Printing Mode
- Real-time PDF RIP & Print in seconds
- Versatile sheet or roll solutions for rigid, flexible, thick, or thin substrates

*Short- & medium-run printing
for in-house printing applications*



Mailing & Printing



Packaging & Coding



Security Printing

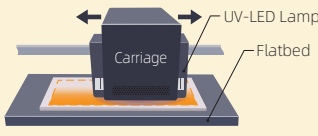


Full Color Digital Printing

HIGHLIGHTS

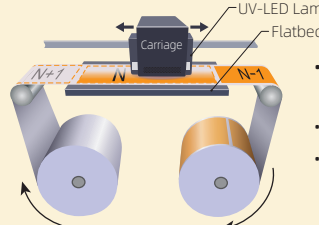
PRINTING MODES

In **flatbed printing mode**, the LPS330 allows users to print directly on rigid substrates and supports different templates for different items.



- Flatbed size: 1200 mm × 350 mm
- Max. print size: 1100 mm × 320 mm edge-to-edge printing (full bleed)
- Up to 40 mm object height

In **roll-to-roll & flatbed printing mode**, the LPS330 allows you to produce eye-catching, distinctive prints on flexible media for a wide range of applications.



- Roll feeding page by page with the length of 1100 mm
- Max. media width: 330 mm
- Max. print width: 320 mm

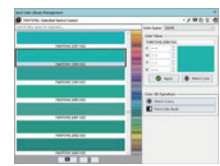
NuviPRINT® PDF RIP Software

NuviPRINT® is professional RIP software, specially designed for processing, interpreting, and printing PDF files. The embedded, native Adobe® PDF Print Engine (APPE) ensures fast and accurate output of PDF files.

- **Powerful Color Management** provides proven color correction methods to ensure vivid and brilliant colors.
 - Color proof & replacement
 - Spot color matching & replacement
 - Spot color library
 - Color book (Lab, CMYK)
 - Input and output curve edit
- With the **Template** feature, new elements will be automatically laid out according to the settings specified by the user.
- **Real-time monitoring of the Hot Folder**. When PDF files are added to the Hot Folder, files will be immediately ripped & printed. Template settings also have an effect on these files.



Spot Color Matching & Replacement

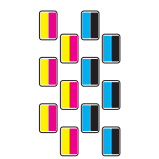


Spot Color Library Management

TECHNICAL SPECIFICATIONS

Print technology	DOD piezoelectric inkjet print technology Active Negative Pressure System
Print resolution	720 × 600 dpi, 720 × 900 dpi, 720 × 1200 dpi
Curing system	2 UV-LED air cooling lamps; Multiple UV lamp control
Ink type	UV curable ink
Number of colors	Up to 6 ink channels: CMYK, CMYKLCm, CMYKVV, CMYKWW, CMYK + Spot Color1 + Spot Color2
Ink tank capacity	3 L per color, double-inlet bulk tanks with liquid level sensors
Substrate types	Flatbed Printing: folding cartons, PVC, wood, glass, foam board, acrylic, tile, metal, plywood, plastic, etc. Roll-to-Roll & Flatbed Printing: coated and uncoated paper, self-adhesive label stock, aluminum foil, white and transparent films, PP, PE, PVC, PET, BOPP, etc.
Unwinder/ Rewinder	Max. roll diameter: 380 mm; Inner core diameter: 76.2 mm; Max. roll width: 330 mm; Max. roll weight: 50 kg; Rolls with weights of more than 50 kg can be optionally supported.
Dimensions (W × D × H)	Printer: 3500 mm × 900 mm × 1785 mm; PC Stand: 630 mm × 610 mm × 1730 mm
RIP & User interface	Professional Printer Control Software (PCS Pro) NuviPRINT® PDF RIP Software; Built-in Adobe® PDF Print Engine (APPE); Printer Control Software (PCS)
Connectivity	PCIe Card; Fast Ethernet (100 Mbps)

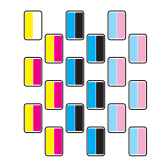
CMYK



12 Print Heads

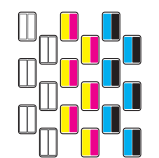
- 7.5 m/min. at 720 x 600 DPI
- 6.0 m/min. at 720 x 900 DPI

CMYKLCm



18 Print Heads

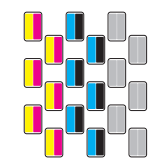
WW + CMYK



18 Print Heads

- 3.5 m/min. at 720 x 600 DPI
- 2.5 m/min. at 720 x 900 DPI

CMYK + VV



18 Print Heads

* Time estimates may be subject to 20% error.



AMICA SYSTEMS Europe B.V.

Camerastraat 6, 1322 BC Almere, the Netherlands Phone: +31 (0) 36 21 00 166

E-mail: info@amicasystems.eu For more information, please visit www.amicasystems.eu

The information contained herein is subject to change without notice. All terms and product names may be trademarks or registered trademarks of their respective owners, and are hereby acknowledged.

©2001-2022 Amica Systems All rights reserved

2208 - c0405